



# Flight Plan & Site Survey

Created using **RPAS Wilco**®

Operation Name:	Saint John MFC Lakeland Elementary School
Pilot Name:	
Pilot Certificate:	
Flight Start:	January 21, 2024 12:37 PM
Flight End:	January 21, 2024 2:37 PM
Flight Area (Latitude):	45° 25' 5.20" N ( 45.418 )
Flight Area (Longitude):	65° 58' 30.90" W ( -65.975 )
Altitude - Radius:	<b>Alt:</b> 699 ft - <b>Rad:</b> 926.0 m ( 0.5 nm)
Airspace:	UNCONTROLLED
FIR - Contact:	CZQM - 506-867-7173

Please ensure you received all required authorizations prior to flight.

## Disclaimer

This Site Survey was created using RPAS Wilco by AIM Robotics. The flight plan contained is intended only for RPAS flights on the date/time and location specified. The user accepts all responsibility for the accuracy and completeness of the information contained.

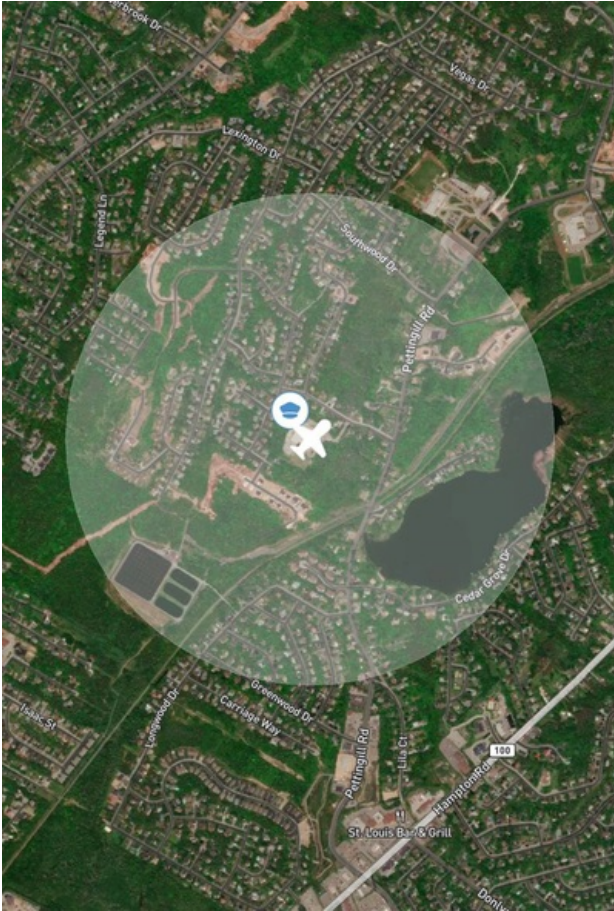
For the complete Terms & Conditions, see

<https://rpswilco.com/#/tnc>



## Included

- Site Survey
- Obstacles (if available)
- Nearby Aerodromes
- Canadian Aviation Regulations
- GFA
- Aerodrome Supplements
  - METAR & TAF (if available)
  - NOTAMS
  - CFS

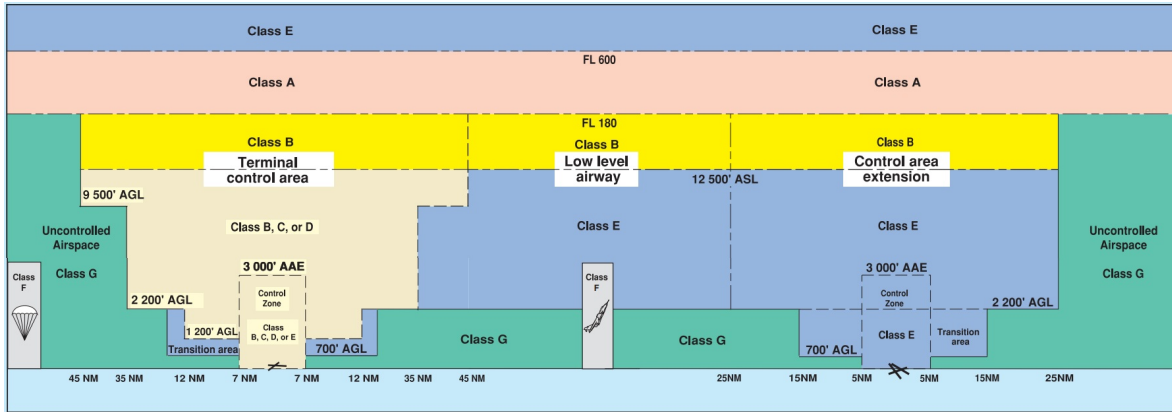
## Flight Map



## MAP Details

	Latitude	Longitude
 <b>MODEL</b>	45° 25' 5.20" N ( 45.418 )	65° 58' 30.90" W ( -65.975 )
 <b>Pilot</b>	45° 25' 8.80" N ( 45.4191 )	65° 58' 34.50" W ( -65.9763 )

## Airspace Classification



## Overlying Airspaces

Class	Name	Floor	Ceiling
E	CHARLO, NB CAE	2200AGL	12500MSL
B	CHARLO, NB CAE	12500MSL	18000MSL
E	Saint John, NB TA	700AGL	12500MSL
B	Saint John, NB TA	12500MSL	18000MSL
E	V318 Airway	2200AGL	12500MSL
B	V318 Airway	12500MSL	18000MSL
E	V310 Airway	2200AGL	12500MSL
B	V310 Airway	12500MSL	18000MSL

## Nearest Aerodromes & Distance from Operation

SAINT JOHN (CYSJ - AERODROME - Cert)	Lat: 45.316	Long: -65.89	13.163 KM	7.11 NM
SAINT JOHN (SAINT JOHN REGIONAL HOSPITAL) (CSN6 - HELIPORT - Cert)	Lat: 45.302	Long: -66.088	15.63 KM	8.44 NM
JENKINS COVE (CJ03 - WATERDROME - Reg)	Lat: 45.594	Long: -65.957	19.61 KM	10.59 NM

# Canadian Aviation Regulations

## Division III — General Operating and Flight Rules

For full listing please visit : <https://laws-lois.justice.gc.ca/eng/regulations/SOR-96-433/FullText.html#s-901.27>

### Visual Line-of-sight

- **901.11 (1)** Subject to subsection (2), no pilot shall operate a remotely piloted aircraft system unless the pilot or a visual observer has the aircraft in visual line-of-sight at all times during flight.
- **(2)** A pilot may operate a remotely piloted aircraft system without the pilot or a visual observer having the aircraft in visual line-of-sight if the operation is conducted in accordance with a special flight operations certificate — RPAS issued under section 903.03.

### Procedures

- **901.23 (1)** No pilot shall operate a remotely piloted aircraft system unless the following procedures are established:
  - **(a)** normal operating procedures, including pre-flight, take-off, launch, approach, landing and recovery procedures; and
  - **(b)** emergency procedures, including with respect to
    - **(i)** a control station failure,
    - **(ii)** an equipment failure,
    - **(iii)** a failure of the remotely piloted aircraft,
    - **(iv)** a loss of the command and control link,
    - **(v)** a fly-away, and
    - **(vi)** flight termination.
- **(2)** If the manufacturer of the remotely piloted aircraft system provides instructions with respect to the topics referred to in paragraphs (1)(a) and (b), the procedures established under subsection (1) shall reflect those instructions.
- **(3)** No pilot shall conduct the take-off or launch of a remotely piloted aircraft unless the procedures referred to in subsection (1) are reviewed before the flight by, and are immediately available to, each crew member.
- **(4)** No pilot shall operate a remotely piloted aircraft system unless the operation is conducted in accordance with the procedures referred to in subsection (1).

### Site Survey

**901.27** No pilot shall operate a remotely piloted aircraft system unless, before commencing operations, they determine that the site for take-off, launch, landing or recovery is suitable for the proposed operation by conducting a site survey that takes into account the following factors:

- **(a)** the boundaries of the area of operation;
- **(b)** the type of airspace and the applicable regulatory requirements;
- **(c)** the altitudes and routes to be used on the approach to and departure from the area of operation;
- **(d)** the proximity of manned aircraft operations;
- **(e)** the proximity of aerodromes, airports and heliports;
- **(f)** the location and height of obstacles, including wires, masts, buildings, cell phone towers and wind turbines;
- **(g)** the predominant weather and environmental conditions for the area of operation; and
- **(h)** the horizontal distances from persons not involved in the operation.

### Operations at or in the Vicinity of an Aerodrome, Airport or Heliport

- **901.47 (1)** No pilot shall operate a remotely piloted aircraft at or near an aerodrome that is listed in the *Canada Flight Supplement* or the *Water Aerodrome Supplement* in a manner that could interfere with an aircraft operating in the established traffic pattern.
- **(2)** Subject to section 901.73, no pilot shall operate a remotely piloted aircraft at a distance of less than
  - **(a)** three nautical miles from the centre of an airport; and
  - **(b)** one nautical mile from the centre of a heliport.
- **(3)** No pilot shall operate a remotely piloted aircraft at a distance of less than three nautical miles from the centre of an aerodrome operated under the authority of the Minister of National Defence unless the operation is conducted in accordance with a special flight operations certificate — RPAS issued under section 903.03.

### Records

- **901.48 (1)** Every owner of a remotely piloted aircraft system shall keep the following records:
  - **(a)** a record containing the names of the pilots and other crew members who are involved in each flight and, in respect of the system, the time of each flight or series of flights; and
  - **(b)** a record containing the particulars of any mandatory action and any other maintenance action, modification or repair performed on the system, including
    - **(i)** the names of the persons who performed them,
    - **(ii)** the dates they were undertaken,
    - **(iii)** in the case of a modification, the manufacturer, model and a description of the part or equipment installed to modify the system, and
    - **(iv)** if applicable, any instructions provided to complete the work.
- **(2)** Every owner of a remotely piloted aircraft system shall ensure that the records referred to in subsection (1) are made available to the Minister on request and are retained for a period of
  - **(a)** in the case of the records referred to in paragraph (1)(a), 12 months after the day on which they are created; and
  - **(b)** in the case of the records referred to in paragraph (1)(b), 24 months after the day on which they are created.
- **(3)** Every owner of a remotely piloted aircraft system who transfers ownership of the system to another person shall, at the time of transfer, also deliver to that person all of the records referred to in paragraph (1)(b).

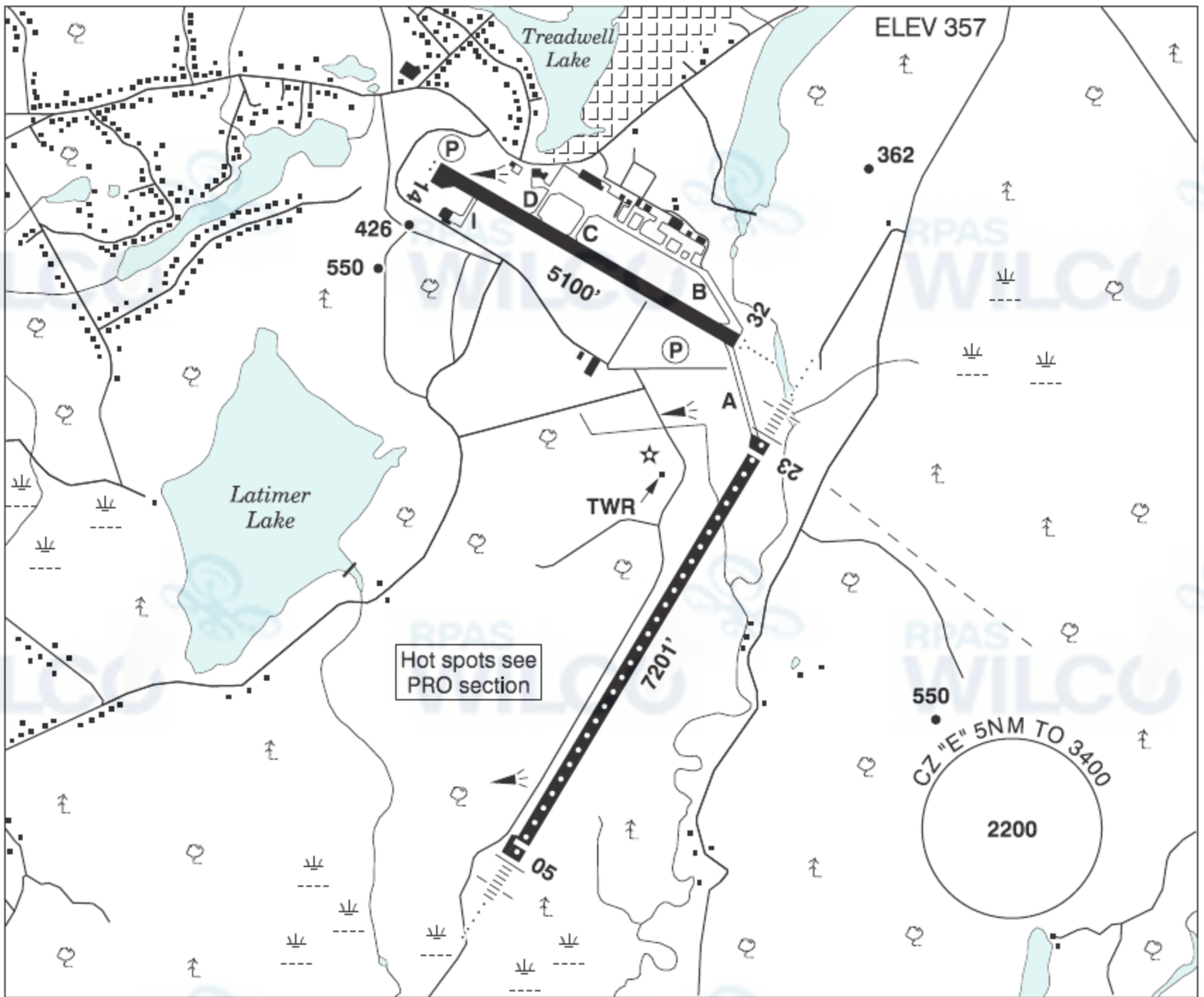


NEW BRUNSWICK

AERODROME/FACILITY DIRECTORY

SAINT JOHN NB

CYSJ



<b>REF</b>	N45 18 57 W65 53 24 8ENE 18°W (2014) UTC-4(3) Elev 357' A5003 LO8 HI6 CAP OC
<b>OPR</b>	Saint John Airport Inc 506-638-5555 0930-0359Z† Cert
<b>PF</b>	A-1,2,3,6,7 09-04Z† C-4,5
<b>CUST</b>	AOE/120 (140 with staged off-loading) 888-226-7277 12-04Z†
<b>FLT PLN</b>	<p><b>FIC</b> London 866-WXBRIEF (Toll free within Canada) or 866-541-4104 (Toll free within Canada &amp; USA)</p> <p><b>ACC</b> (IFR only) Moncton 506-867-7177 or 866-480-8200.</p> <p><b>WX</b> METAR H24 TAF H24, issue times: 00, 06, 12, 18Z</p>
<b>SERVICES</b>	Call out chg may be levied for one or more svcs
<b>FUEL</b>	100LL H24 self-serve, JA (FSII avbl) 12-21Z† Mon-Fri, JA-1 (FSII avbl) 08-24Z†
<b>OIL</b>	All
<b>S</b>	1(ltd, for lgt acft),2,4,5,6
<b>ARFF</b>	PARTICIPATING CAT 5 10-04Z†, O/T call out chg.
<b>JASU</b>	CE8, CA2
<b>PVT ADV</b>	Atlantic Flt Centre 123.3 12-21Z† Mon-Fri 506-634-5565 O/T 506-650-8402, exc hols; Air Canada Ground Handling 130.37 506-632-1524
<b>MIL CON</b>	ASIG Canada (Irving Oil) 506-653-7409

## NEW BRUNSWICK

## AERODROME/FACILITY DIRECTORY

## SAINT JOHN NB (Cont'd)

CYSJ

<b>RWY DATA</b>	Rwy 05(049°)/23(229°) 7201x148 ASPH Thlds 05 & 23 displ 197' Rwy 14(138°)/32(318°) 5100x148 ASPH Rwy 14 down 0.84% Rwy 14/32 avbl as twy dur night when Rwy 05/23 RVR 1200(1/4sm) down to 600(1/8sm) RESA: All Rwys 492'
<b>RWY CERT</b>	Rwy 05 RVR 600(1/8sm)/Rwy 23 RVR 600(1/8sm) AGN IV Rwy 14 RVR 1200(1/4sm)/Rwy 32 RVR 1200(1/4sm) AGN IV
<b>TWY CERT</b>	Twy I AGN IIIB
<b>TWY</b>	Twy I Pvt
<b>RCR</b>	Opr CRFI and win maint avbl ltd hrs. PLR/PCN
<b>LIGHTING</b>	05-AN(TE HI CL), 23-AN(TE HI CL), 14-AS(TE ME) P2, 32-AO(TE ME) P2
<b>COMM</b>	
<b>RADIO</b>	118.5 236.6 PTC avbl (E) (emerg only 506-646-7225)
<b>RCO</b>	London rdo 123.475 (FISE) 126.7 (bcst)
<b>MF</b>	rdo 118.5 5NM 3400 ASL (CAR 602.98)
<b>PAL</b>	Moncton Ctr 124.3 135.5 270.8
<b>NAV</b>	
<b>NDB</b>	SJ 212 (M) N45 23 30 W65 49 08 ALPINE ZST 397 (L) N45 13 40 W65 57 30
<b>VOR/DME</b>	YSJ 113.5 Ch 82 N45 24 26 W65 52 15 (494')
<b>ILS</b>	ISJ 110.5 (Rwy 23) RVR LOC reliable only within 10° either side of centreline; IDM 108.3 (Rwy 05) RVR LOC reliable only within 10° either side of centreline.
<b>PRO</b>	Pursuant to CAR 602.96, in vis conds blw 1/8sm with an RVR of 600 or greater, an IFR clnc must be obtained prior to taxiing for dep and acft are not auth to taxi when another acft is on the maneuvering area, or on apch to any rwy. Ctc CYSJ FSS for tfc status. Pilots should refer to Canadian Airport Charts (CAC) to obtain details on established hot spots, prior to operating on maneuvering areas. CAC are available for free on the NAV CANADA website. <b>Reduced/Low Visibility Procedures:</b> See CAP

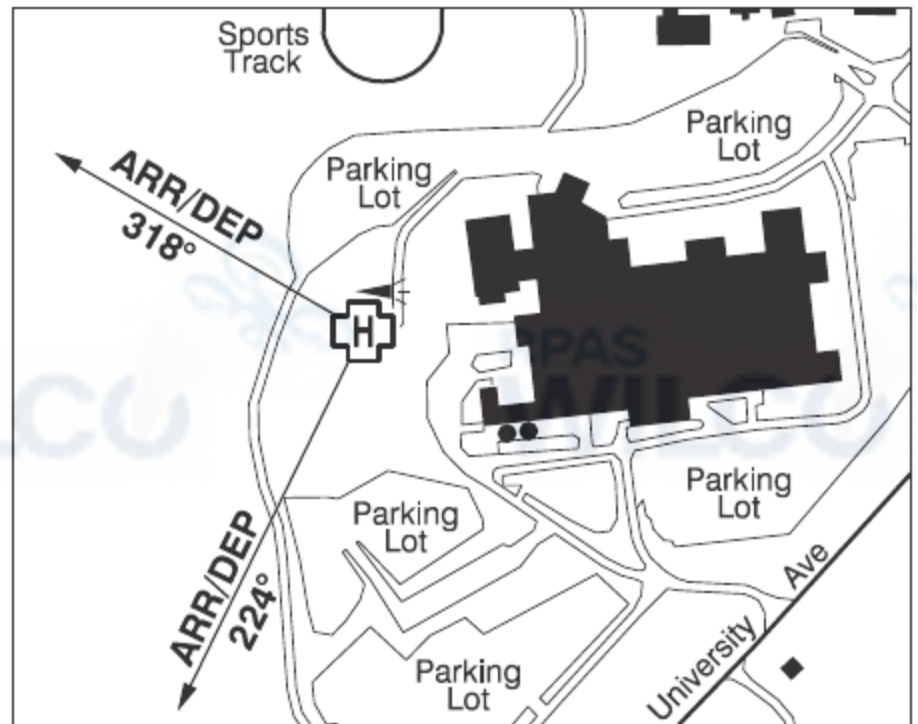
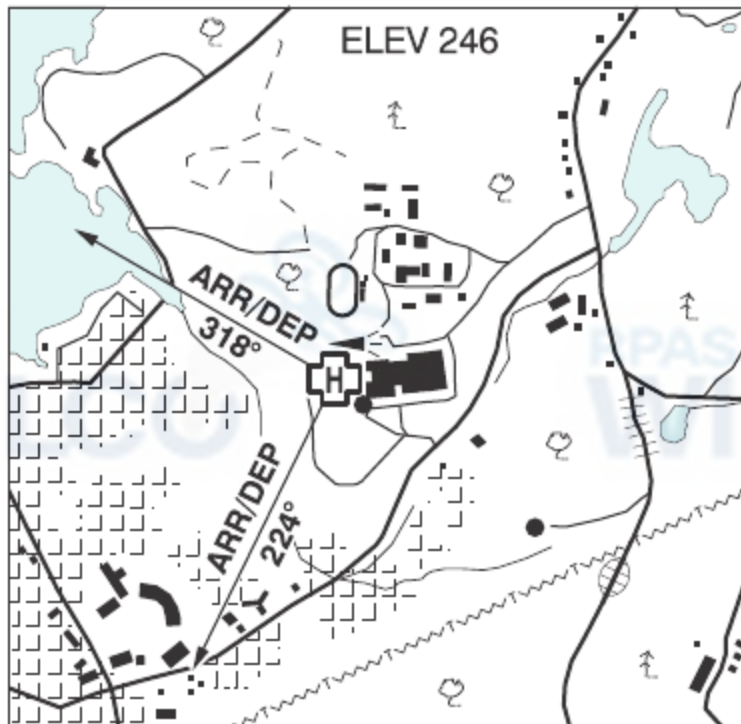


## NEW BRUNSWICK

## AERODROME/FACILITY DIRECTORY

## SAINT JOHN (SAINT JOHN REGIONAL HOSPITAL) NB (Heli)

CSN6



<b>REF</b>	N45 18 08 W66 05 17 1.5N 18°W (2013) UTC-4(3) Elev 246' A5003
<b>OPR</b>	Saint John Regional Hospital Atlantic Health Sciences Corp 506-648-6614 Cert PPR
<b>FLT PLN</b>	
<b>FIC</b>	London 866-WXBRIEF (Toll free within Canada) or 866-541-4104 (Toll free within Canada & USA)
<b>ACC</b>	(IFR only) Moncton 506-867-7177 or 866-480-8200.
<b>HELI DATA</b>	FATO/TLOF 92' x 92' ASPH Safety Area 122' x 122' Max heli overall length 61' Rstd to medevac & govt use
<b>RCR</b>	Opr Ltd win maint
<b>LIGHTING</b>	RF(FL)
<b>COMM</b>	
<b>RCO</b>	London rdo 123.475 (FISE) 126.7 (bcst)
<b>ATF</b>	tfc 123.2 5NM 3300 ASL
<b>PRO</b>	Arr/dep 318° and 224° fr heli, slope 8% (H3)
<b>CAUTION</b>	Lgtd smokestack 377 ASL (126 AGL) 490' SE fr heli. Lgtd smokestack 405 ASL (205 AGL) aprx 440' SE fr heli. Lgtd windsock 149' NE fr heli.

# CANADA WATER AERODROME SUPPLEMENT

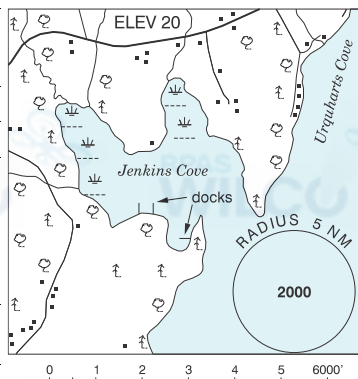
Effective 0901Z 20 April 2023 to 0901Z 21 March 2024

## B88 AERODROME/FACILITY DIRECTORY

### KARS / JENKINS COVE NB

CJO3

<b>REF</b>	N45 35 38 W65 57 25 1.3ESE 17°W (2017) UTC-4(3) Elev 20' A5003
<b>OPR</b>	Richard Pattie 506-485-1122 Reg
<b>PF</b>	B-1 C-2,5
<b>FLT PLN</b>	
<b>FIC</b>	London 866-WXBRIEF (Toll free within Canada) or 866-541-4104 (Toll free within Canada & USA)
<b>ACC</b>	(IFR only) Moncton 506-867-7177 or 866-480-8200.
<b>SERVICES</b>	
<b>S</b>	5
<b>A/D DATA</b>	Open water May-Dec
<b>COMM</b>	
<b>ATF</b>	tfc 123.05 5NM 3000 ASL



### KASBA LAKE NT

CJP5

<b>REF</b>	N60 17 W102 31 7°E (2013) UTC-6(5) Elev 1089' A5024 A5031
<b>OPR</b>	Kasba Lake Lodge 250-248-3572 Reg PPR
<b>PF</b>	B-1,2,5 PN Oprg Jun15-Sep 1
<b>FLT PLN</b>	
<b>FIC</b>	Edmonton 866-WXBRIEF (Toll free within Canada) or 866-541-4102 (Toll free within Canada & USA)
<b>SERVICES</b>	
<b>FUEL</b>	100LL, JA Prior arng thru Opr Jun 15 - Aug 15
<b>A/D DATA</b>	Open water Jun-Oct. Sand beach.
<b>COMM</b>	
<b>ATF</b>	UNICOM ltd hrs O/T tfc 122.8 5NM 4200 ASL

